

Personal Support Worker

ANISHINABEK EMPLOYMENT AND TRAINING SERVICES

ST. JOSEPH'S CARE GROUP

CONFEDERATION COLLEGE



Table of Contents

Slide Number	Content
3	Regional Map
4	What is a Personal Support Worker (PSW)?
5	Funding for the Program
6	Getting Started
7	Recruitment
8	Job Readiness
9	Training Begins
10-12	Courses
13	Clinical Placements
14-15	Along With
16	Program Requirements
17	Critical Documents and Immunization Records
18	Potential Career Paths

Regional Map



What is a Personal Support Worker (PSW)?

- PSWs work under the close supervision of a Registered Nurse and Registered Practical Nurse, providing personal care to residents and respecting their physical, emotional, social, cultural and spiritual needs and preferences.
- PSWs are active members of the care team, assisting in the planning, implementation and ongoing evaluation of individualized resident focused plans of care, in compliance with the Long Term Care Act.



Funding for the Program

- A request for submission was received for the Target Initiative Funding and the work began. Mandy Price our Proposal and Partnership Development Officer began writing for funding.
- Once approval for funding was received, Hailey Watson was hired for the position of Project Co-ordinator and things got underway.



Getting Started

- The first step is getting the word out about this opportunity to the nine communities that we service.
- Developed an advertising campaign
- Printed posters and brochures, advertised on our website and took full advantage of social media.



PERSONAL SUPPORT WORKER
Training Program (Begins May 2, 2016)

 Anishinabek Employment and Training Services  Confederation COLLEGE  St. JOSEPH'S CARE GROUP

AETS in cooperation with The Ministry of Training, Colleges and Universities Aboriginal Education Office, Confederation College and St. Joseph's Care Group, have initiated a new program which involves Aboriginal participants completing a compressed Personal Support Worker (PSW) Training Program. The 21 week compressed PSW program is designed to provide you with the knowledge and skills to meet the expectations of this role. Program will consist of 17 weeks in-class and 4 weeks of clinical placement with the intention that upon completion of the program all participants will become personal support workers, gain employment in the sector, particularly with St. Joseph's Care Group.

We deliver employment and training programs & services to the following 9 First Nations:

- Animbiigoo Zaag'igan Anishinaabek • Biinjitiwaabik Zaaging Anishinaabek • Bingwi Neyaashi Anishinaabek
- Kiashe Zaaging Anishinaabek • Michipicoten First Nation • Ojibways of the Pic River First Nation • Pays Plat First Nation
- Pic Moberg First Nation • Red Rock Indian Band

Program Includes:

- Persuasive Writing CS007
- Supportive Care Theory I PW101
- Professional Growth PW102
- PSW Practice I: Lab PW106
- PSW Practice I: Community Clinical PW107
- Helping Relationships PW128
- Assisting Clients Across the Lifespan I PW130
- Supportive Care Theory II PW201
- PSW Practice II: Lab PW206
- PSW Practice II: Long-term Care Clinical PW207
- PSW Clinical: Consolidation PW208

Program provides:

- Meals
- Accommodations
- Training Allowances

Our vision is to lead in the development of a skilled Aboriginal workforce, empowering the Anishinabek, respectful of our culture and heritage.

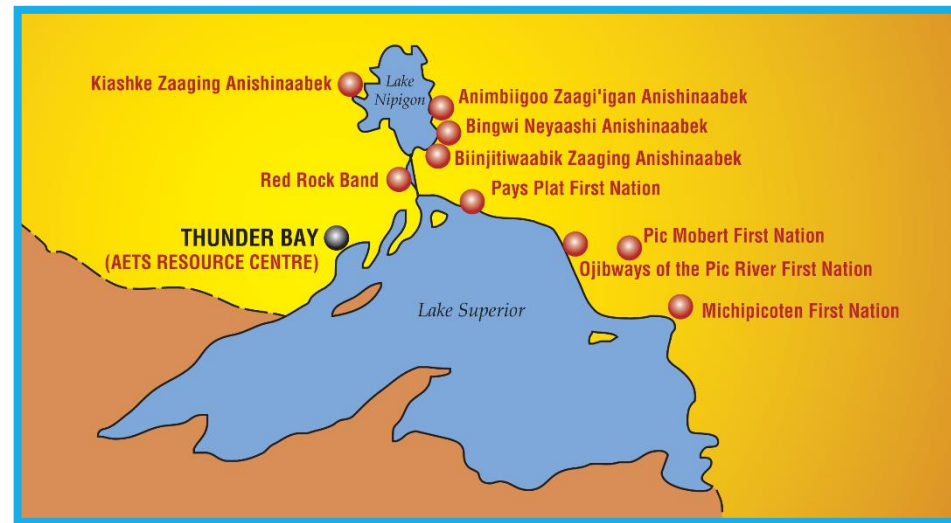
FOR MORE INFORMATION ABOUT ANISHINABEK EMPLOYMENT AND TRAINING SERVICES

Mandy Price Proposal & Partnership Development Officer Mandy.Price@aets.org	Hailey Watson Project Coordinator Hailey.Watson@aets.org
277 Park Ave. Thunder Bay, ON Tel: (807) 346-0307 Toll Free: (866) 870-2387	Email: aets@aets.org Website: www.aets.org

Proudly Funded By:

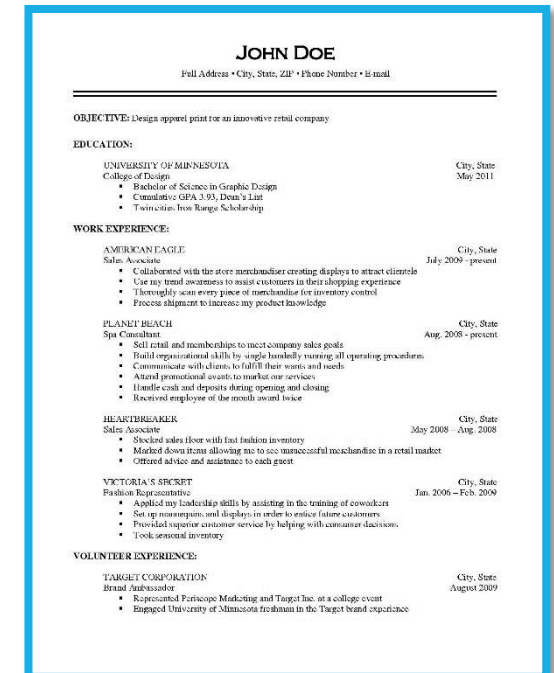

Recruitment

- The recruitment sessions have begun and we are starting to travel to our respective communities
 - Provide in-person information about the opportunity and we started collecting applications.
 - Lake Nipigon, Sand Point, Red Rock, Pays Platt, Pic Mober, Pic River, Rocky Bay Michipicoten and Gull Bay
- Interviews will be held prior to the program beginning



Job Readiness Training

- Resume
- Cover Letters
- Interview Preparation



Training Begins – May 2nd

- Confederation College
- 21 Weeks long
 - 17 Weeks – Theory & Clinical
 - 4 Weeks – Consolidation Clinical
- 3 Stages of Clinical Placement
- Program ends September 22nd



Courses for the PSW Program

Course	Description
Persuasive Writing	<ul style="list-style-type: none">• Help learners to express themselves clearly, correctly and persuasively in written form• Engage in analytical reading and critical thinking• Compile and present research in essay form (Following APA)
Supportive Care Theory	<ul style="list-style-type: none">• provide the learner with information that will enable them to provide support to the consumer/client
Professional Growth	<ul style="list-style-type: none">• Examine concepts of legislation, consumer rights and ethics of care in relation to the role and scope of practice for PSWs• Introduce the learner to different types of health care agencies, explore concepts of teaching and learning, as well as time and stress management.
PSW Practice I Lab	<ul style="list-style-type: none">• Opportunity to practice, in a simulated lab setting
PSW Practice I: Community Clinic	<ul style="list-style-type: none">• Opportunity to apply, in a supervised placement, knowledge and concepts learned in the classroom and lab• consist of independent learning and clinical experience within a community setting.

Courses – Continued

Course	Description
Helping Relationships	<ul style="list-style-type: none">• Concepts of establishing and maintaining helping relationships with clients and their families through a professional, therapeutic approach,• Explore the knowledge and skills required to effectively communicate in a variety of situations,• Understand and maintain professional boundaries and become a respectful, caring member of the team.
Assisting Clients Across the Lifespan I	<ul style="list-style-type: none">• Exploring the general understanding of the structure and function of the human body• Identify common diseases and conditions that will help them to provide the care that each client needs.
Supportive Care Theory II	<ul style="list-style-type: none">• Examine the role of PSW when providing assistance to the client with health challenges, and explore the concepts involved in providing optimal support and care.• Topic areas will include care for the individual, assisting with the family, common medical disorders, mental health conditions and issues, dementia and confusion, death and dying.

Courses – Continued

Course	Description
PSW Practice Lab II: Lab	<ul style="list-style-type: none"> • Practice in a simulated placement setting concepts and knowledge learned in the classroom. • The following lab skills will be included: <ul style="list-style-type: none"> • documentation, hygiene, grooming, urinary and bowel elimination needs, vital signs (TPR & BP), height and weight, non-sterile dressing, and heat and cold application. • Advanced skills include oxygen needs, tube feeding, and assisting with medications. • This course will also provide the opportunity for the learner to experience the Alzheimer Society's - Virtual Dementia Tour and Gentle Persuasive Approach (PW207).
PSW Practice II: Long-Term Care Clinical	<ul style="list-style-type: none"> • Opportunity to apply in a supervised placement, knowledge and concepts learned in the classroom and lab. • This course will consist of clinical experience within a longterm care setting.
PSW Clinical: Consolidation	<ul style="list-style-type: none"> • This clinical experience provides the learner with an opportunity to integrate the knowledge and skills acquired throughout the program in a long-term facility under a preceptorship program.

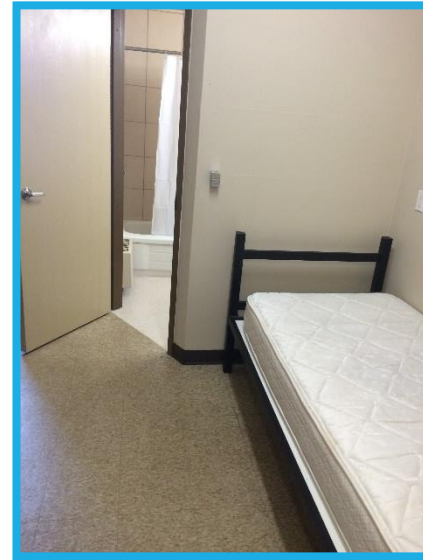
Clinical Placements – 3 Levels

PW 107 – Practice 1 Community Clinical	PW 207 – Practice 2 Long-Term Care Clinical	PW 208 – PSW Clinical Consolidation
8:30 a.m. – 5:00 p.m.	8 hours/day	Varies by shift
Monday & Friday – June	10 Days – August	August 25 – September 22, 2016
With VON, St. Elizabeth Health Care	SJCG	Work one-on-one with a staff member from SJCG/Other
Instructors there for assistance	Instructors there for assistance	Instructors there about <u>2 hours</u> for questions



Along with...

- Accommodations at Confederation College Residence
 - Single bed, desk, closet
 - Microwave, bar sized fridge
 - Private bathroom
 - Common Room
 - Laundry Facilities (open 24/7)
- Meal Plan



Along with...

- Training Allowance
- Uniform
 - Solid burgundy in colour (no prints allowed)
- Footwear
 - White, closed-toe & heel
 - Visible labelling must be minimal
- Evening events
 - Bowling
 - Silver City



Program Requirements

- Ontario Secondary School Diploma (or equivalent)
- Or successful completion of the Mature Student Test
 - Can be written at the Registrar's Office at Confederation College
- Or successful completion of the General Education Development Test (GED)

Critical Documents & Immunization Records

REQUIRED	Recommended
Tetanus / Diphtheria / Polio	Influenza (flu) Vaccine
MMR (Measles/Mumps/Rubella)	CPR (HCP)
Hepatitis B Vaccine	First Aid
Mantoux Testing (TB) – 2 Step TB Skin Test	
Chicken Pox (Varicella) Vaccine	
Criminal Records Check – Vulnerable Sector	
Immunization and Communicable Disease Form	

Potential Career Paths



Personal Support Worker

- YOU ARE HERE
- \$19.985 - \$21.252 / hour



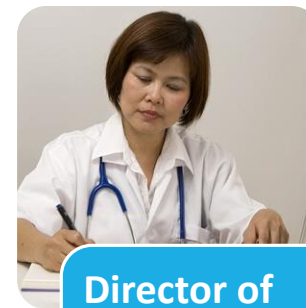
Registered Practical Nurse

- 2 Year Diploma
- Must maintain 60% in all classes



Registered Nurse

- 4 year Degree



Director of Nursing

- Supervises the care of all patients



Nurse Practitioner

- Provide health promotion and maintenance through the diagnosis and treatment of acute illness and chronic condition.

Applications available on the AETS Website

APPLICATION DEADLINE: MONDAY, APRIL 18 AT 12:00 NOON

Program Contact:

**Hailey Watson
Project Co-ordinator
(807) 346-0307
hailey.watson@aets.org**